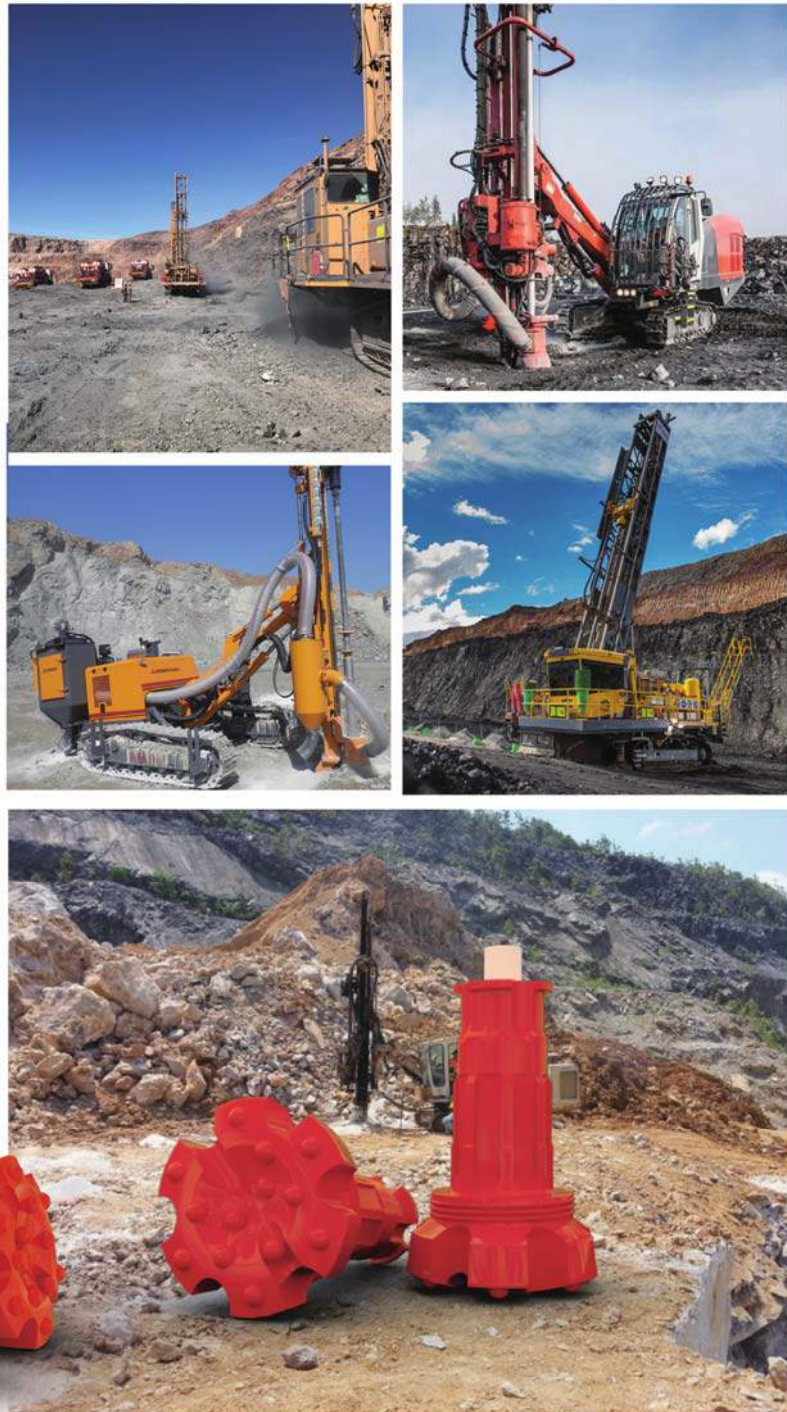


DTH Drilling Equipment



GLOBAL DRILLING INDUSTRY EXPERTS



High Air Pressure DTH Hammer -With Foot Valve Code

DTH Hammer With Foot Valve (i.e. MQL5)

M	QL	5
Our Company: Maxdrill	Bit shank: D- DHD Bit Shank QL5- QL50 Bit Shank SD5-SD5 Bit Shank	Inch: 5" hammer

Decomposition	Item	Part Number	Description
	1	MBR2A01	Top Sub
	2	MBR2A02	Check Valve
	3	MBR2A03	Spring
	4	MBR2A04	Air Distributor
	5	MBR2A05	Internal Cylinder
	6	MBR2A06	Piston
	7	MBR2A07	External Cylinder
	8	MBR2A08	Guided Sleeve
	9	MBR2A09	"O" Ring of Stop Ring
	10	MBR2A10	Stop Ring
	11	MBR2A11	Drive Chuck
	12	MBR2A12	Drill Bit

Product Number

MBR2A

Technical Parameters

Length(Less bit)	880mm
Weight(Less bit)	14.50Kg
External Diameter	Ø62mm
Bit Shank	BR2
Hole Range	ø 70- ø 90
Connection Thread	RD 50 / BOX
Working Pressure	1.0-2.5Mpa
Impact Rate at 1.4Mpa	28HZ
Recommended Rotation Speed	25-40r/min
Air Consumption	145-350PSI 200-600CFM

Decomposition	Item	Part Number	Description
	1	MD25A01	Top Sub
	2	MD25A02	Check Valve
	3	MD25A03	Spring
	4	MD25A04	Air Distributor
	5	MD25A05	Internal Cylinder
	6	MD25A06	Piston
	7	MD25A07	External Cylinder
	8	MD25A08	Guided Sleeve
	9	MD25A09	"O" Ring of Stop Ring
	10	MD25A10	Stop Ring
	11	MD25A11	Drive Chuck
	12	MD25A12	Drill Bit

Product Number

MD25A

Technical Parameters

Length(Less bit)	872mm
Weight(Less bit)	16.00Kg
External Diameter	Ø71mm
Bit Shank	MD25
Hole Range	ø 76- ø 90
Connection Thread	T42 x 10 x 1.5
Working Pressure	1.0-2.5Mpa
Impact Rate at 1.5Mpa	28HZ
Recommended Rotation Speed	25-40r/min
Air Consumption	145-350PSI 200-600CFM

Bit Face Shape Selection

Concave Face

The all-round application bit face specifically for medium hard and homogenous rock formations. Good hole deviation control and good flushing capacity.



Convex Face

For high penetration rates in soft to medium-hard with low to medium air pressures. It is the most resistance to steel wash, and may reduce the load and wear on the gauge buttons, but poor hole deviation control.



Flat Face

This kind of face shape is suitable for hard to very hard and abrasive rock formations in applications with high air pressures. Good penetration rates and resistance to steel wash.



DTH Bit Code (i.e. 150MQL50CC)

150	M	QL50	CC/CV/FF
Bit Diameter: 150mm	Our company: Maxdrill	Bit Shank: QL50-QL50 Bit Shank SD5-SD5 Bit Shank M50-Misson50 Bit Shank D-DHD Bit Shank N-NUMA Bit Shank	Front Design: CC-Concave CV-Convex FF-Flat Face

Carbide Button Shape Selection



Domed/ Round Button

Domed / Round buttons are usually used as gauge buttons of DTH Bits, suitable for very abrasive and very hard formations.



Parabolic/Semi-Ballistic Button

Parabolic buttons are usually used as gauge buttons and front buttons of DTH Bits, suitable for medium abrasive and hard formations.



Ballistic Button

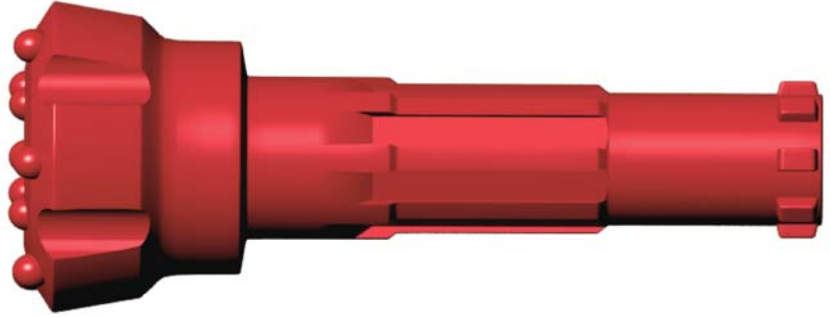
Ballistic buttons are usually used as front buttons of DTH Bits, suitable for medium abrasive and medium hard formations. They can also be used as gauge buttons if the rock is soft.



Sharp Button

Sharp buttons are usually used as front buttons of DTH Bits for soft formations where fast penetration rates are possible and button breakage is minimal.

BR2

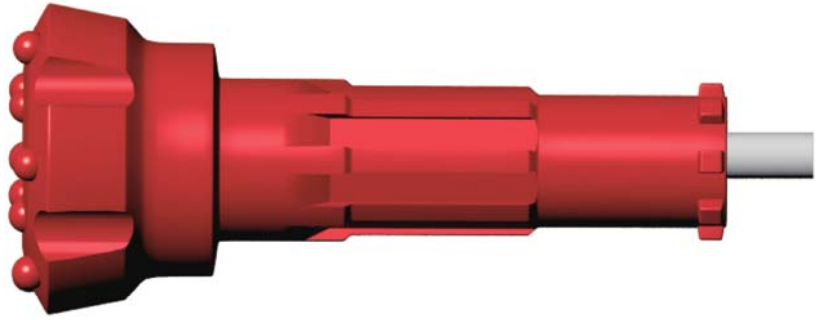


Face	Diameter		Part No.	No. x Button (mm)			Flushing holes	Weight
	Dia.	Inch		Outer	Inner	Front		kg
Flat	70	2 3/4	70MBR2FF	6 x φ12		4 x φ10	2	2.0
	72	2 7/8	72MBR2FF	6 x φ12		4 x φ10	2	2.2
	76	3	76MBR2FF	6 x φ12		5 x φ10	2	3.0
	80	3 3/16	80MBR2FF	6 x φ13		4 x φ11	2	3.4

Face	Diameter		Part No.	No. x Button (mm)			Flushing holes	Weight
	Dia.	Inch		Outer	Inner	Front		kg
Concave	70	2 3/4	70MBR2CC	6 x φ12	2 x φ10	2 x φ10	2	2.0
	72	2 7/8	72MBR2CC	6 x φ12	2 x φ10	2 x φ10	2	2.2
	76	3	76MBR2CC	6 x φ12	2 x φ10	2 x φ10	2	3.0
	80	3 3/16	80MBR2CC	6 x φ13	2 x φ10	2 x φ11	2	3.4

Face	Diameter		Part No.	No. x Button (mm)			Flushing holes	Weight
	Dia.	Inch		Outer	Inner	Front		kg
Convex	70	2 3/4	70MBR2CV	6 x φ12	2 x φ10	2 x φ10	2	2.0
	72	2 7/8	72MBR2CV	6 x φ12	2 x φ10	2 x φ10	2	2.2
	76	3	76MBR2CV	6 x φ12	2 x φ10	2 x φ10	2	3.0
	80	3 3/16	80MBR2CV	6 x φ13	2 x φ10	2 x φ11	2	3.4

MD25



Face	Diameter		Part No.	No. x Button (mm)			Flushing holes	Weight
	Dia.	Inch		Outer	Inner	Front		kg
Flat	76	3	76MD25FF	6 x φ13		5 x φ10	2	3.3
	82	3 1/4	82MD25FF	6 x φ13		4 x φ11	2	3.5
	90	3 1/2	90MD25FF	8 x φ12		5 x φ12	2	3.7

Face	Diameter		Part No.	No. x Button (mm)			Flushing holes	Weight
	Dia.	Inch		Outer	Inner	Front		kg
Concave	70	2 3/4	70MD25CC	6 x φ12	2 x φ10	2 x φ10	2	2.0
	72	2 7/8	72MD25CC	6 x φ12	2 x φ10	2 x φ10	2	2.2
	76	3	76MD25CC	6 x φ12	2 x φ10	2 x φ10	2	3.0
	80	3 3/16	80MD25CC	6 x φ13	2 x φ10	2 x φ11	2	3.4

Face	Diameter		Part No.	No. x Button (mm)			Flushing holes	Weight
	Dia.	Inch		Outer	Inner	Front		kg
Convex	70	2 3/4	70MD25CV	6 x φ12	2 x φ10	2 x φ10	2	2.0
	72	2 7/8	72MD25CV	6 x φ12	2 x φ10	2 x φ10	2	2.2
	76	3	76MD25CV	6 x φ12	2 x φ10	2 x φ10	2	3.0
	80	3 3/16	80MD25CV	6 x φ13	2 x φ10	2 x φ11	2	3.4



-  Add:9/F, FuZhong International Plaza, No.72 XinHua Road, Nan Ming District,GuiYang,China(550001)
-  Factory in Guizhou : Er Guan Ba Industry Park, Jiuchang Town, Xiuwen County, Guizhou Province, China
-  Factory in Liaoning : No.51 Yushan Road, Dayushanyuan Industry Park , Lianshan District, Huludao, Liaoning Province,China
-  Tel:86-851-88639106 Fax:86-851-88639108
-  E-mail:office@kemaico.com info@kemaico.com
-  Web:www.maxdrillrocktools.com www.maxdrill.com.cn